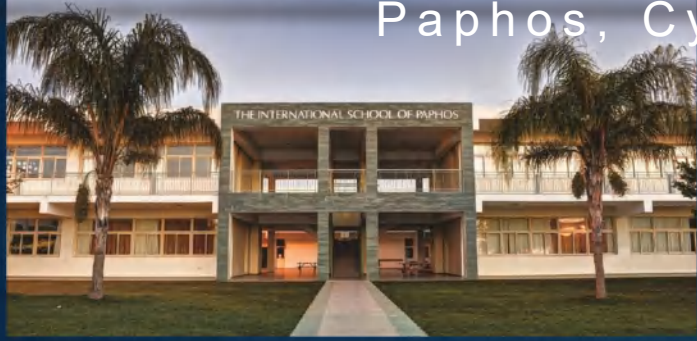


DIAMOND CITY

PAPHOS | CYPRUS



SITE LOCATION - UNIVERSAL Paphos, Cyprus



帕福斯国际学校
10分钟

INTERNATIONAL
SCHOOL OF
PAPHOS
10 MIN.



帕福斯中心医院
8分钟

PAPHOS GENERAL
HOSPITAL
8 MIN.



帕福斯市政厅
4分钟

PAPHOS TOWN HALL
4 MIN.



国王大道购物中心
4分钟

KINGS AVENUE MALL /
SUPERMARKET
4 MIN.



帕福斯游艇码头
8分钟

PAPHOS HARBOUR
8 MIN.





ABOUT CYPRUS

Cyprus is the third largest island in the Mediterranean Sea. It is deservedly considered to be one of the most attractive places for living, leisure and business. Annually hundreds of thousands of tourists from all around the world come here to enjoy the magnificent climate, relax, and to immerse into the luxurious atmosphere and comfort of 5-star hotels. The climate of Cyprus is considered to be one of the healthiest and mildest in the world. The sea air rich in iodine and the pure mountain air is the key to good health and wellness. Cyprus also offers the lowest taxes in Europe and foreign buyers of property on the island can receive residence permits.

关于塞浦路斯

塞浦路斯是地中海第三大岛。它理应被认为是最适合居住、休闲和商务的绝佳场所。每年都有成千上万的来自世界各地的游客世界各地都来这里享受优质的气候，放松身心，并沉浸在五星级酒店的豪华氛围和舒适。塞浦路斯的气候被认为是世界上最健康、最温和的气候之一丰富的碘和纯净的山区空气是健康和舒心的关键。塞浦路斯还提供了欧洲最低的税收，外国买家在这里购买房产可获得居留许可。

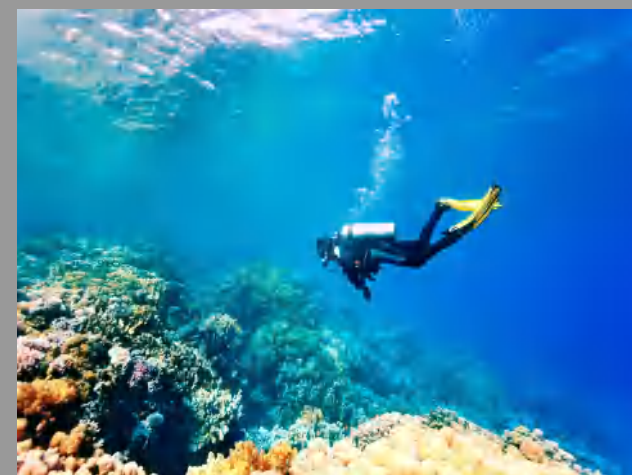


300 days of sunshine a years
每年300多天的阳光天气

The cleanest and the safest
beaches in Europe
欧洲最干净和安全的海滩

European education standard
欧盟教育体系

Expected economic growth
through development of gas fields
and shipping industry
通过发展油田和航运业实现经济增长



90% English-speaking population
90% 的人使用英语

Lowest taxes in Europe
欧盟最低税收

Beautiful nature and picturesque
landscapes
美丽的自然风光和如画的风景

Rich cultural and historic traditions
丰富的文化底蕴和悠久的历史传统

Lowest crime rate in Europe
欧洲最低的犯罪率

Health care in GESY
全民医疗保障系统



- Full sea views
全海景

- Central city, convenient transportation
市中心，交通便利

- Gated compound with common swimming pool and lift
带有公共游泳池和电梯的封闭式小区

- High ceilings and Spacious balcony
高挑的层高，宽敞的阳台

- Equipped with private underground parking and storage
配备私人地下停车库和储藏间

- Penthouse with private roof gardens and pools
带有私人屋顶花园和游泳池的顶层公寓

- Ground floor with private pool and garden
带有私人游泳池和花园的一楼公寓

DIAMOND CITY



CHOICE OF PROPERTIES

BLOCK A

| NO. 房号 | FLOOR 楼层 | TYPE 类型 | BEDROOMS 卧室 | INDOOR AREA 室内 | COVERED VERANDA 覆盖阳台 | SEMI-COVERED VERANDA 半遮盖阳台 | VERANDA AREA 阳台 | PRIVATE GARDEN 花园 | STORAGE AREA 储藏间 | PRIVATE COVERED PARKING 私人停车位 | TOTAL AREA 总面积 | POOL泳池 (optional) (可选) |
|-----------|-------------|------------|----------------|----------------------|----------------------------|----------------------------------|-----------------------|-------------------------|------------------------|-------------------------------------|----------------------|------------------------------|
| A1-101 | 1 | APARTMENT | 3 | 102 | 20 | | | 45 | 2 | 12 | 181 | JACUZZI |
| A1-102 | 1 | APARTMENT | 2 | 84 | 24 | | 13 | 57 | 2 | 12 | 192 | JACUZZI |
| A2-101 | 1 | APARTMENT | 2 | 84 | 28 | | 7 | 41 | 2 | 12 | 174 | JACUZZI |
| A2-102 | 1 | APARTMENT | 2 | 84 | 29 | | 13 | 50 | 2 | 12 | 190 | JACUZZI |
| A3-101 | 1 | APARTMENT | 2 | 84 | 24 | | 7 | 47 | 2 | 12 | 176 | JACUZZI |
| A3-102 | 1 | APARTMENT | 3 | 102 | 26 | | | 79 | 2 | 12 | 221 | JACUZZI |
| A1-201 | 2 | APARTMENT | 2 | 85 | 24 | | | | 2 | 12 | 123 | COMMON |
| A1-202 | 2 | APARTMENT | 2 | 84 | 24 | | | | 2 | 12 | 122 | COMMON |
| A2-201 | 2 | APARTMENT | 2 | 84 | 28.4 | | | | 2 | 12 | 126.4 | COMMON |
| A2-202 | 2 | APARTMENT | 2 | 84 | 24 | | | | 2 | 12 | 122 | COMMON |
| A3-201 | 2 | APARTMENT | 2 | 84 | 30 | | | | 2 | 12 | 128 | COMMON |
| A3-202 | 2 | APARTMENT | 2 | 85 | 27.4 | | | | 2 | 12 | 126.4 | COMMON |
| A1-301 | 3 | APARTMENT | 2 | 85 | 26.4 | | | | 2 | 12 | 125.4 | COMMON |
| A1-302 | 3 | APARTMENT | 2 | 84 | 24 | | | | 2 | 12 | 122 | COMMON |
| A2-301 | 3 | APARTMENT | 2 | 84 | 23.4 | | | | 2 | 12 | 121.4 | COMMON |
| A2-302 | 3 | APARTMENT | 2 | 84 | 24 | | | | 2 | 12 | 122 | COMMON |
| A3-301 | 3 | APARTMENT | 2 | 84 | 24 | | | | 2 | 12 | 122 | COMMON |
| A3-302 | 3 | APARTMENT | 2 | 85.5 | 27.4 | | | | 2 | 12 | 126.9 | COMMON |
| A1-401 | 4 | PENTHOUSE | 3 | 105 | 67.5 | | 42 | | 3.5 | 12 | 230 | PRIVATE |
| A2-401 | 4 | PENTHOUSE | 3 | 106 | 52 | | 54 | | 3.5 | 12 | 227.5 | PRIVATE |
| A3-401 | 4 | PENTHOUSE | 3 | 106 | 30 | 37 | 42 | | 3.5 | 12 | 230.5 | PRIVATE |

BLOCK B

| NO. 房号 | FLOOR 楼层 | TYPE 类型 | BEDROOMS 卧室 | INDOOR AREA 室内 | COVERED VERANDA 覆盖阳台 | SEMI-COVERED VERANDA 半遮盖阳台 | GARDEN 花园 | ROOF GARDEN 屋顶花园 | STORAGE AREA 储藏间 | PRIVATE COVERED PARKING 私人停车位 | TOTAL AREA 总面积 | POOL泳池 (optional) (可选) |
|-----------|-------------|------------|----------------|----------------------|----------------------------|----------------------------------|--------------|------------------------|------------------------|-------------------------------------|----------------------|------------------------------|
| B101 | 1 | APARTMENT | 3 | 118 | 40 | | 246 | | 2.8 | 12 | 418.8 | PRIVATE |
| B102 | 1 | APARTMENT | 3 | 118 | 37 | | 255 | | 2.8 | 12 | 424.8 | PRIVATE |
| B201 | 2 | APARTMENT | 3 | 118 | 32 | | 4.5 | | 2.8 | 12 | 169.3 | COMMON |
| B202 | 2 | APARTMENT | 3 | 118 | 29 | | 4.8 | | 2.8 | 12 | 166.6 | COMMON |
| B301 | 3 | APARTMENT | 3 | 118 | 32 | | 4.5 | | 3 | 12 | 169.5 | COMMON |
| B302 | 3 | APARTMENT | 3 | 118 | 41 | | 4.8 | | 3 | 12 | 178.8 | COMMON |
| B401 | 4 | PENTHOUSE | 3 | 118 | 32 | | 4.5 | 64 | 3 | 12 | 233.5 | COMMON |
| B402 | 4 | PENTHOUSE | 3 | 118 | 15 | 27 | 4.8 | 64 | 3 | 12 | 243.8 | COMMON |

BLOCK A - BLOCK B

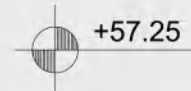


BLOCK A - BLOCK B



MASTER PLAN 总体规划图

PUBLIC GREEN
517 SQM



PRIVATE ROAD

BLOCK A

+60.20

+60.20

+60.10

BLOCK B

+60.20

+60.20

+60.25

+58.25

+58.25

PUBLIC ROAD 452 SQM



BLOCK A - BLOCK B- PILOTI/GROUND FLOOR



Underground parking and storage

地下停车场和储藏间

BLOCK A



BLOCK A



BLOCK A



BLOCK A



FIRST FLOOR PLAN

一层平面图

BLOCK A



SECOND FLOOR PLAN

二层平面图

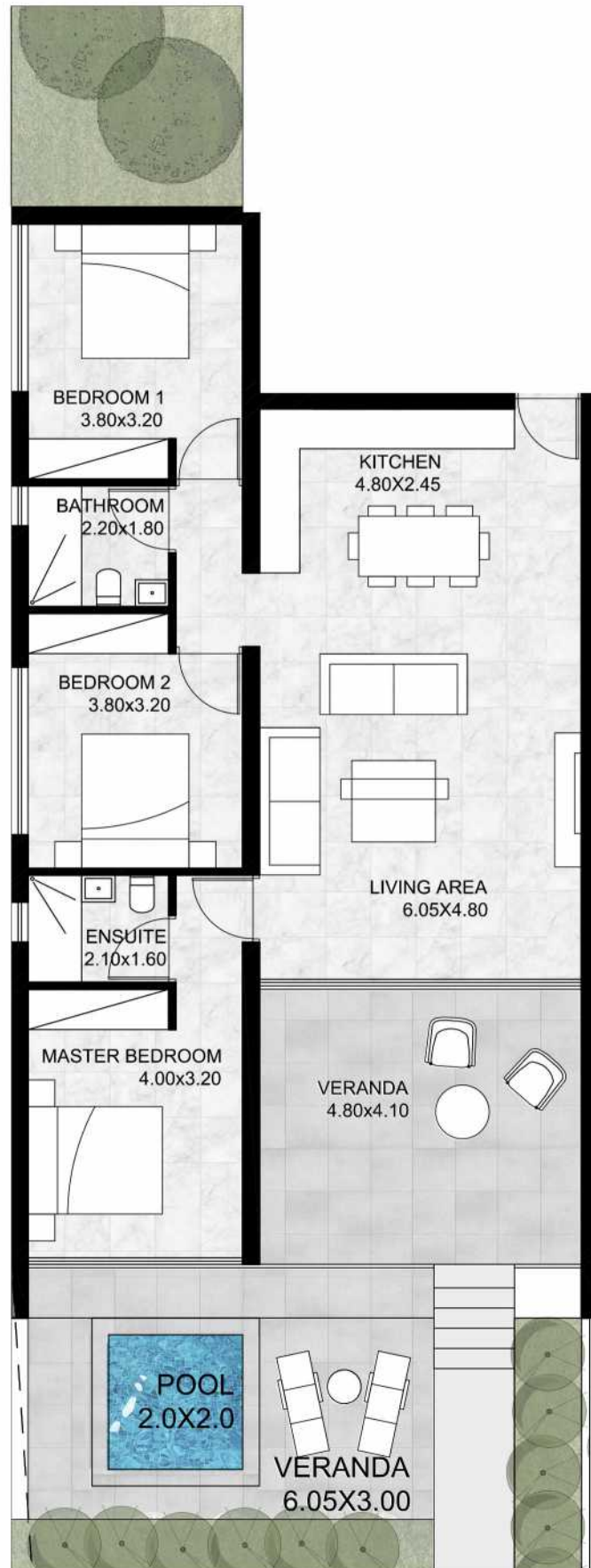


THIRD FLOOR PLAN

三层平面图

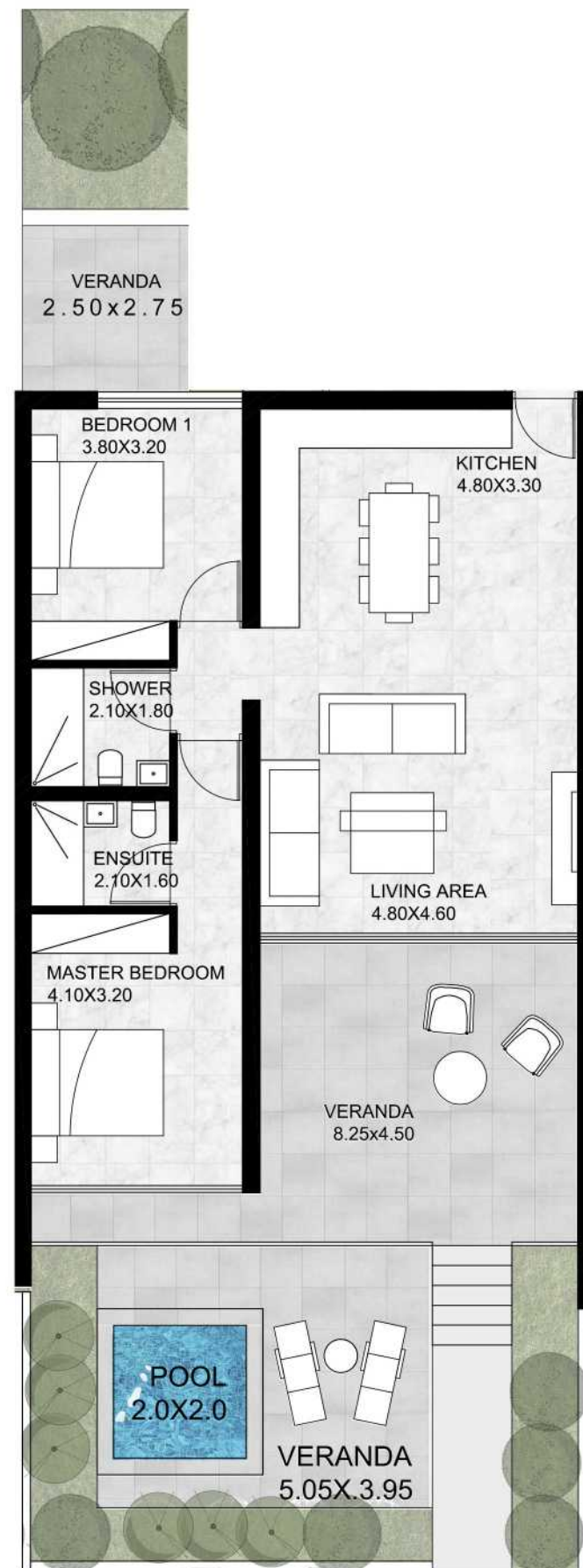
BLOCK A



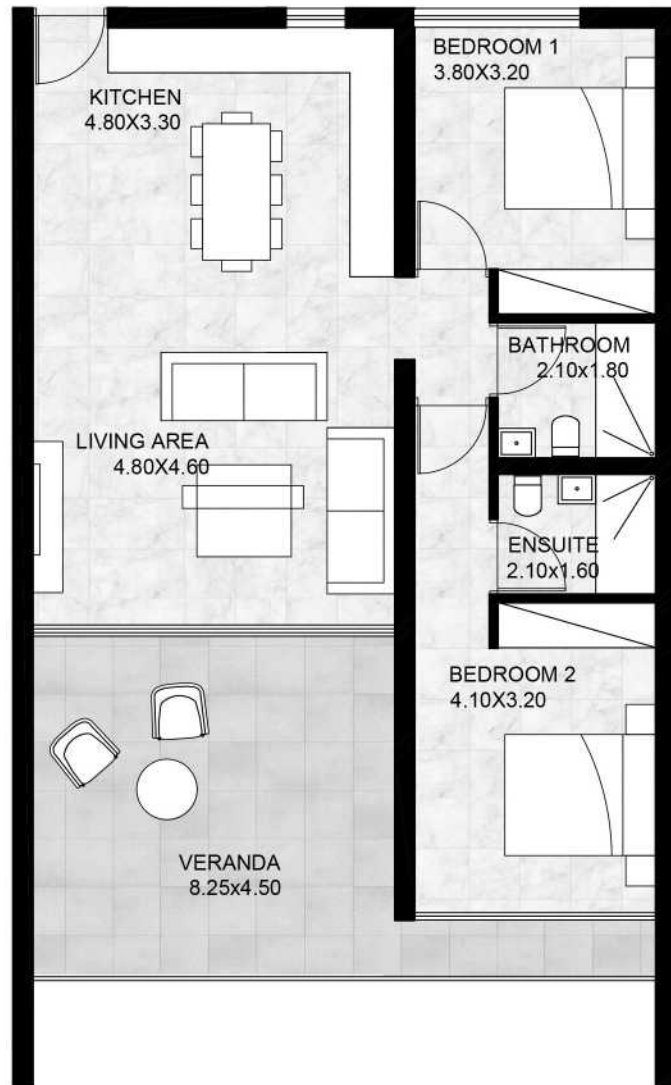


TYPE 1
 BLOCK A, 3 BEDROOM WITH GARDEN
 BUILT AREA : 102 SQ.M.
 COVERED VERANDA : 20 - 26 SQ.M.
 STORAGE: 2 SQ.M.

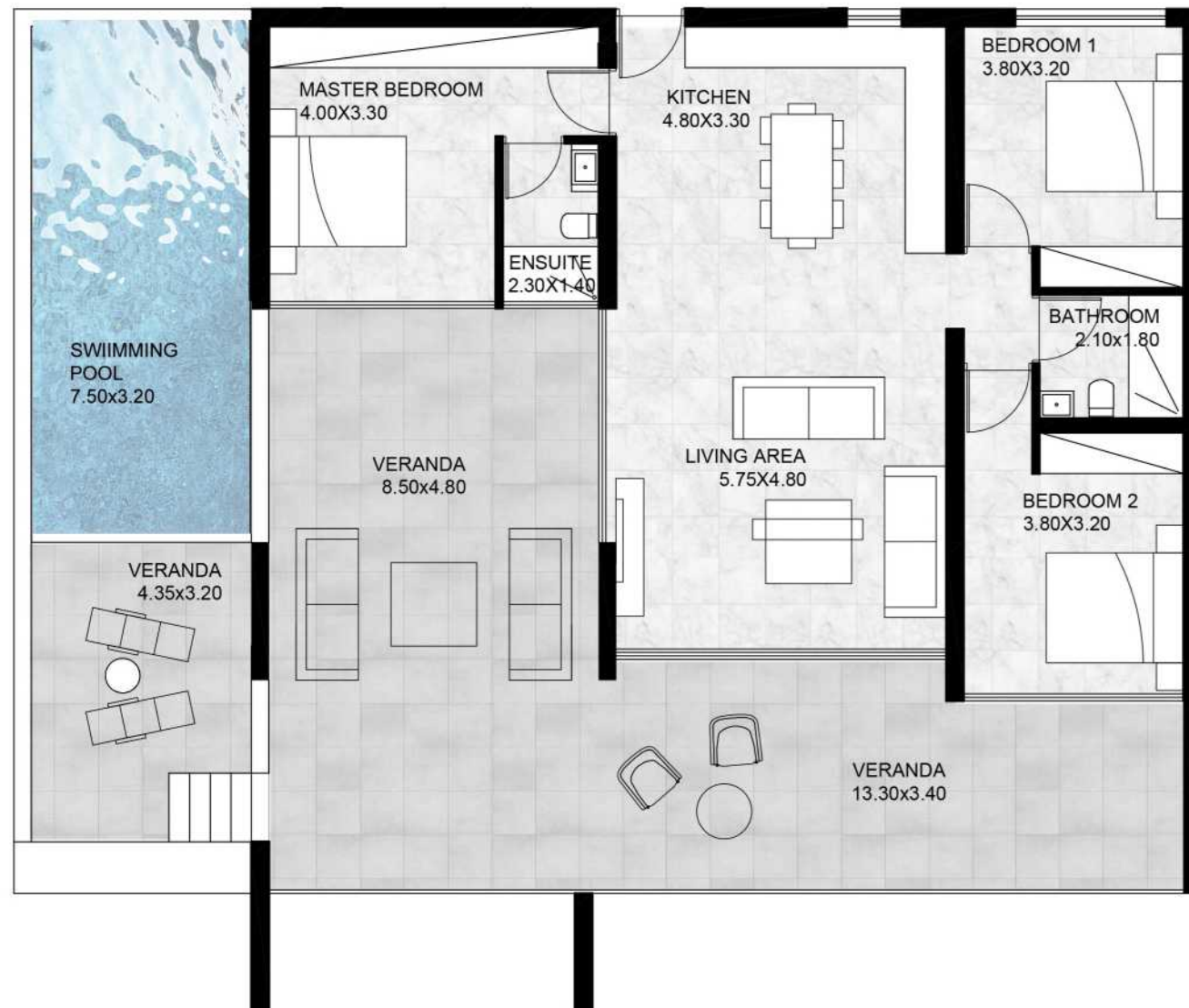
TYPES 户型



TYPE 2
BLOCK A, 2 BEDROOM WITH GARDEN
BUILT AREA : 84 SQ.M.
COVERED VERANDA : 24 - 29 SQ.M.
STORAGE: 2 SQ.M.



TYPE 3
BLOCK A, 2 BEDROOM
BUILT AREA : 84 SQ.M.
COVERED VERANDA : 24 - 30 SQ.M.
STORAGE: 2 SQ.M.



TYPE 4
 BLOCK A, 3 BEDROOM WITH POOL
 BUILT AREA : 106 SQ.M.
 COVERED VERANDA : 30 - 67 SQ.M.
 STORAGE: 3,5 SQ.M.

BLOCK B



BLOCK B



BLOCK B



BLOCK B



SECOND FLOOR PLAN

二层平面图



THIRD FLOOR PLAN

三层平面图

BLOCK B



FOURTH FLOOR PLAN

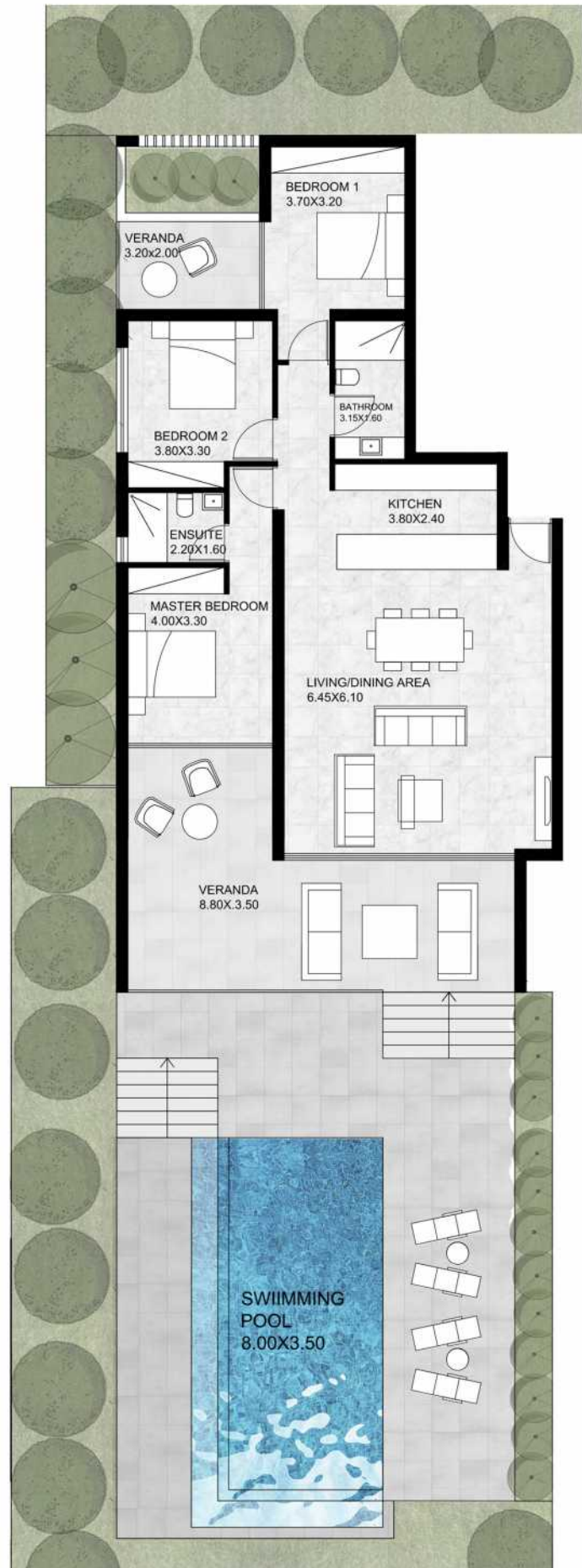
顶层平面图



ROOF TERRACE

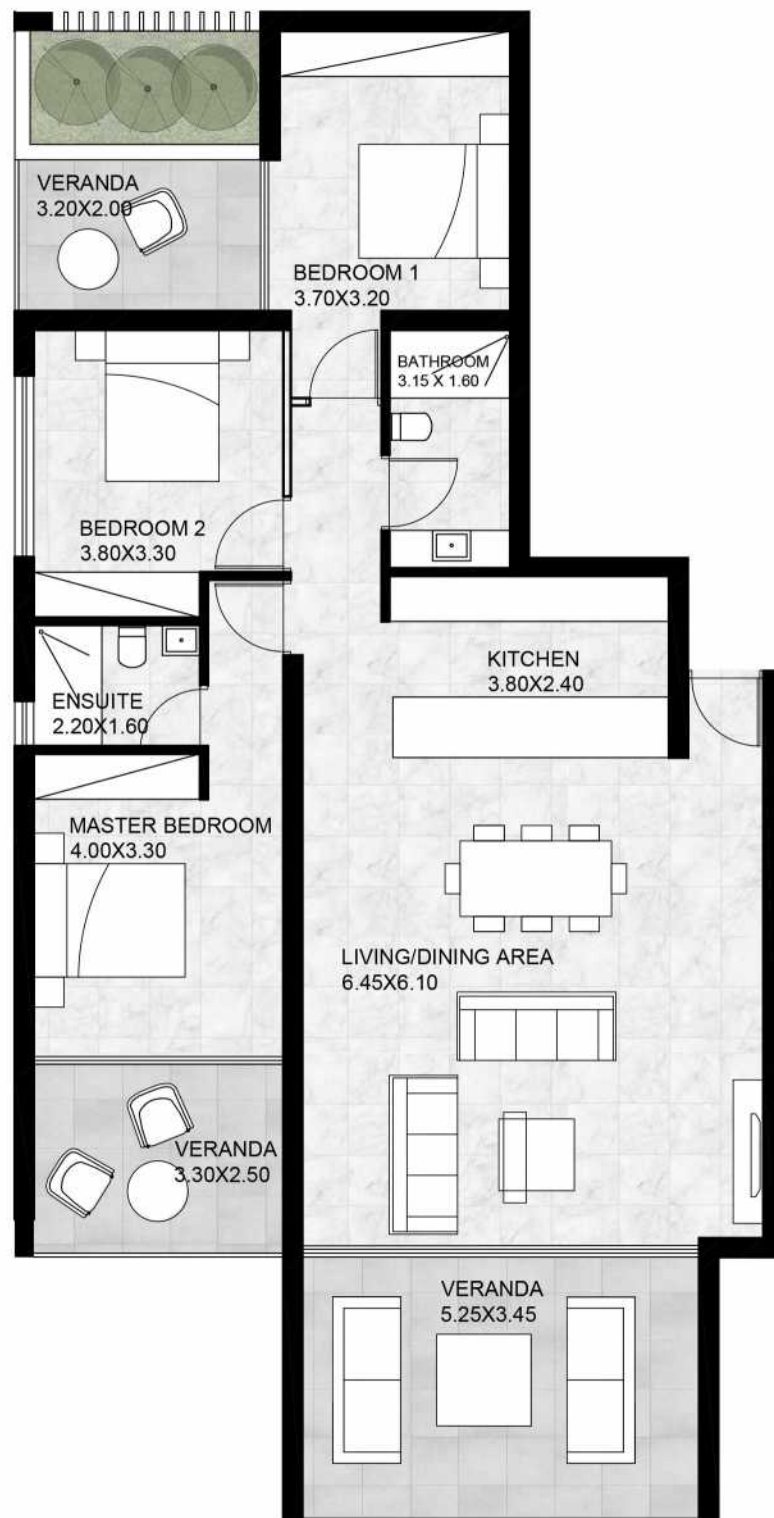
屋顶花园

TYPES 户型



TYPE 5
 BLOCK B, 3 BEDROOM WITH POOL
 BUILT AREA : 118 SQ.M.
 COVERED VERANDA : 37 - 40 SQ.M.
 STORAGE: 3 SQ.M.

TYPES 户型



TYPE 6
BLOCK B, 3 BEDROOM
BUILT AREA : 118 SQ.M.
COVERED VERANDA : 15 - 41 SQ.M.
STORAGE: 3 SQ.M.

FRAMING THE SUNSET



SUNSET VIEW



SUNSET VIEW



SEA VIEW





BLOCK A- TYPICAL TYPE



BLOCK A - TYPICAL TYPE



BLOCK A - PENTHOUSE



BLOCK A - PENTHOUSE



BLOCK A - PENTHOUSE



BLOCK B - TYPICAL TYPE



BEDROOM



BATHROOM

